

# New Polylase™ Laser Family

**Unparalleled Features In Our  
Super Compact Aesthetic Laser Systems**



- Fast, Reliable, Powerful
- Compact Footprint - Easy to transport
- On demand use - No warm-up required
- Say goodbye to Costly Consumables
- Lightweight Motorized Handpiece with Rapid Spot Size changes
- Versatile with Multiple FDA Cleared Applications
- Low Maintenance and Low Cost of Ownership

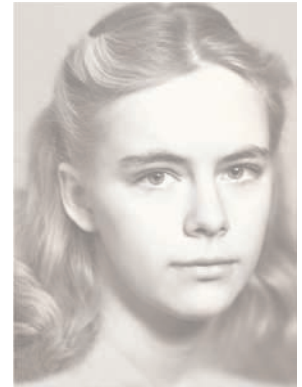


DDC TECHNOLOGIES

**HAIR REMOVAL** **PIGMENTED LESIONS** **VASCULAR LESIONS** **LEG VEINS** **FACIAL WRINKLES**

# POLYLASE LP - DUAL OUTPUT- MULTIPLE APPLICATIONS

In our days, when the use of the light beam for hair removal became a widely known aesthetic procedure, the choice of the right device became very important. Every hair removal professional knows how critical the correct combination of many different parameters is for the final success of a treatment. Now the choice is easy: DDC Technologies POLYLASE LP dual wavelength system, which features both Alexandrite and Nd:YAG lasers in one design and offers you maximum flexibility in laser hair removal. Only the POLYLASE LP provides a unique combination of the right wavelength, high fluence and correct pulse duration settings. Such flexibility lets you effectively treat patients with different skin types: The Alexandrite laser provides high efficacy for hair removal on light skin (types I-IV). This wavelength is also indicated for removal of age/sun spots (lentigines), purple veins, port wine stains and birth marks. The Nd:YAG laser provides the advantages of safe hair removal on dark/tanned skin (types IV-VI). The deeper penetration of the 1064 nm wavelength provides maximum efficacy for hair removal in deep follicles (e.g. man's beard, woman's bikini line, etc.). The wide range of pulse width (0.5 ms to 100 ms) and high repetition rate (up to 10 Hz) allows this machine to be one of the most effective for non-ablative wrinkle reduction (collagen rejuvenation) treatments. All this is possible with the POLYLASE LP without sacrificing the unique laser light features, such as high absorption selectivity and deep penetration. The correctly selected laser wavelength means that the light energy is absorbed in the targeted hair follicles while sparing the surrounding, healthy tissue. POLYLASE also emits light energy in very carefully timed bursts or pulses to maximize the effectiveness of the treatment and decrease the risk of scarring or other skin tissue damage.



MULTI SPOT SIZE HANDPIECE

## Advantages at a Glance

Dual-Laser System	Economy	Design
<ul style="list-style-type: none"> <li>❑ One system- two types of lasers for advanced applications</li> <li>❑ No device change on individual treatment requirements</li> <li>❑ Careful and effective depilation for all skin types due to correct wavelength. Treats nearly every hair diameter and color</li> <li>❑ High patient satisfaction due to high application efficiency</li> </ul>	<ul style="list-style-type: none"> <li>❑ Dual output versatile laser to cover most of your practice demands (also available in affordable Nd:YAG or Alexandrite single laser configuration for your most important tasks)</li> <li>❑ No costly consumables with low maintenance costs compared to competition</li> <li>❑ Reduced treatment time due to unsurpassed laser speed and power</li> </ul>	<ul style="list-style-type: none"> <li>❑ Low space requirements with easy transportability due to compact size and light weight</li> <li>❑ User friendly; easy to learn, convenient to use</li> <li>❑ Easy and ergonomic handling</li> <li>❑ Rapid spot size changes with power zoom lens</li> <li>❑ On demand use – no need to wait for warm- up – It's ready whenever you are</li> </ul>

## **AL-40 - ADVANCED ALEXANDRITE LASER- EFFICACY, SELECTIVITY AND SPEED**

The AL-40 laser offers all advantages of Alexandrite 755 nm wavelength, which is absorbed by melanin, providing superior efficacy for the removal of unwanted hair on light skin types (I-IV). It also effectively treats epidermal pigmented lesions such as age spots, sun spots, birth marks and freckles. The AL-40 is smaller, lighter and more portable than competitors' system with comparable output. And with up to 5 pulse/sec output it is the fastest Alexandrite laser on the market. In fact, the AL-40 can deliver its full specified energy per pulse at 2 pulses per second! High output energy allows using large spot sizes (up to 16mm in diameter), which is very important for fast treatment of the large areas, such as a man's back or legs.

In addition to unsurpassed speed and power, the AL-40 (as well as the POLYLASE and EPY 50 systems) comes with a unique Compressed Air Jet skin cooling system. This continuous action cooling allows conducting treatment at high pulse repetition rates, yet does not require any consumables! This is the device that large aesthetic centers as well as practitioners in small offices have been looking for.



Upper back and shoulders hair removal:  
3 months after third treatment



## **EPY-50 - FAST, RELIABLE AND AFFORDABLE Nd:YAG LASER**

The EPY-50 Nd:YAG laser has all advanced features of the POLYLASE LP Nd:YAG, yet offers an affordable and more lightweight package. It is ideal for the hair removal practice with more dark-skinned (types IV-VI) patients, as well as broken capillary/ spider vein and leg vein vascular treatments. It delivers high pulse repetition rates (up to 10 pulse/sec) for effective non-ablative facial wrinkles treatment.

## **POLYLASE SYSTEMS - SIMPLE AND USER FRIENDLY**



LASER CONTROL PANEL

DDC Technologies has designed all of its aesthetic lasers to be easy to learn and easy to use. Two interactive laser controllers take complete care of the laser performance - so the operator can concentrate on taking care of their patient. A 7-inch color control panel display provides all key information regarding laser settings and operation parameters. The actual delivered energy fluence is displayed after each pulse, adjusted for selected hand piece type/spot size. Most laser operating parameters are user selectable in order to provide versatile treatment regimes, yet the input is easy and intuitive with touch-screen display controls and memory settings. Once frequently used laser settings are defined, they can be stored in the systems' memory for future recall. The pre-selected laser operating parameters can be activated by simple pressing one of the five memory buttons on the control panel. This can save precious treatment time by eliminating frequent laser parameter changes.

# Product Specifications

Item	Polylase LP / AL-40	Polylase LP / EPY-50
<b>Laser Type</b>	Long Pulse Alexandrite Laser	Long Pulse Nd:YAG Laser
<b>Laser Wavelength</b>	755 nm	1064 nm
<b>Max. Energy Per Pulse, J</b>	50 J	60 J
<b>Laser Pulse Width</b>	0.5-100 ms (user selectable)	0.5-100 ms (user selectable)
<b>Max. Average Power</b>	80 W	120 W
<b>Pulse Repetition Rate</b>	Single Shot-5 Hz	Single Shot-10 Hz
<b>Beam Delivery</b>	Optical fiber, 10 feet (3 m) length	Optical fiber, 10 feet (3 m) length
<b>Optical Fiber core diameter</b>	1000 mm	1000 mm
<b>Handpiece Spot Size</b>	10 mm, 12 mm or 16 mm dia.	10 mm, 12 mm or 16 mm dia. or 2 mm, 3 mm and 4 mm in "Vein" mode.
<b>Max. Energy Fluence</b>	25 J/cm <sup>2</sup> @ 16 mm spot size 65 J/cm <sup>2</sup> @ 10 mm spot size	30 J/cm <sup>2</sup> @ 16 mm spot size 75 J/cm <sup>2</sup> @ 10 mm spot size High (>400 J/cm <sup>2</sup> ) fluence settings are available with small spot size (vein) objective.
<b>Handpiece Cooling</b>	Compressed chilled air jet	Compressed chilled air jet
<b>Dimensions (HxWxL)</b>	33"x 15"x 34.5" (845x380x880mm)	
<b>Weight</b>	65 kg (143lbs.) / 55 kg (120 lbs.) for EPY-50	
<b>Power Requirements</b>	215-240V single phase ~50/60Hz, 20A	

Applications	Polylase	AL-40	EPY-50
<b>Hair Removal</b>	X	X	X
<b>Leg Veins</b>	X		X
<b>Vascular Lesions</b>	X	X	X
<b>Pigmented Lesions</b>	X	X	
<b>Facial Wrinkles</b>	X		X

Polylase™ Laser Family FDA-cleared technologies and corresponding applications



## DDC TECHNOLOGIES

DDC Technologies Inc.  
311 Woods Avenue,  
Oceanside NY, 11572  
Tel.: (516) 594-1533  
Toll-Free: (866) FIND LASER  
Tech. Support: (516) 770-0441  
E-mail: sales@ddctech.com  
Web Site: www.ddctech.com

